

new. media



New Media Plates and Modules

CLICK[®]

new.
media



new media

Solutions for all manner of media cabling problems

The modern home is now more than a mere home. It doubles up occasionally as a cinema, concert hall, meeting venue and computer room etc.. Each of these functions brings with it its own unique requirements in terms of the provision of necessary services such as telephone or satellite sockets etc.

Even in recent memory designers and builders did not think beyond providing a perfunctory level of electrical switches, sockets and pendant light fittings in a new home.

Nowadays, as well as providing an ever increasing number of these items, provision must be made for the myriad different electrical and electronic products which proliferate our homes.

Traditionally, products such as telephone and TV coaxial sockets etc. have all been supplied built into a standard size wall plate. The environment in today's office and home however requires a number of services to be provided to a specific work station or convenient access point. The most flexible and efficient means of doing this is the use of modules on a multiple aperture plate.

Contents

New Media Module Plates	i5
New Media Modules	i14
Domestic Media Distribution Unit	i20
Technical Details	i21

The NEW MEDIA range illustrated in the following pages encompasses a wide range of media and power modules, providing the designer and installer a host of solutions for all manner of media cabling problems.



New Media Plates

The brief given to our designers charged with the task of developing the NEW MEDIA range was to produce a comprehensive yet flexible and user friendly 'system' which enables the installer to easily create topical media and power cabling solutions.

All of the modules featured in this brochure are of the standard Euro Grid configuration based on 1 aperture modules of 25 x 50mm. Mounting plates are available as wall or floor plates and can accommodate 1 – 16 modules according to requirements.

Instead of numerous unsightly individual sockets, a single NEW MEDIA plate can be used at a convenient point to bring together any combination of media modules. The individual modules are available in black or white finish and are suitable for mounting on blank plates from selected accessory ranges, namely the POLAR and MODE moulded accessory ranges, the CLICK metal clad range plus the DECO, DEFINE and DEFINITY decorative metal ranges.



New Media Plates

8 Module Plate



MP508



The furnished plates illustrated above contain 6 x 1 aperture and 1 x 2 aperture media modules (left) and 4 x 2 aperture 13A socket outlet modules (right).

New Media Modular Plate Range

MP508 Small Media Front Plate (8 Module)

The yoke 'MP510' is required to mount the media modules into prior to assembling the front plate.

For yokes and back boxes see page i8.

Back Box Depth: 47mm **Cable Size:** Dependant on modules used

Dimensions: 250mm x 87mm x 8mm

These New Media plates are manufactured from stainless steel, available in the following decorative finishes: Antique Brass (AB), Polished Brass (BR), Satin Brass (SB), Polished Chrome (CH), Satin Chrome (SC), Black Nickel (BN), Pearl Nickel (PN), Brushed Stainless (BS), Stainless Steel (SS) and Polar White (PW).
Understanding the code: **MP** - Plate Style **508** - Product No **BN** - Plate Finish.



MP516CH



The furnished plates illustrated above contain 6 x 1 aperture and 1 x 2 aperture media modules (top row) and 4 x 2 aperture socket outlet modules (bottom row).

The yoke 'MP510' is required to mount the media modules prior to assembling the front plate.

New Media Modular Plate Range

MP516 Large Media Front Plate (2 X 8 Module)

For yokes and back boxes see page i8.

Back Box Depth: 47mm **Cable Size:** Dependant on modules used

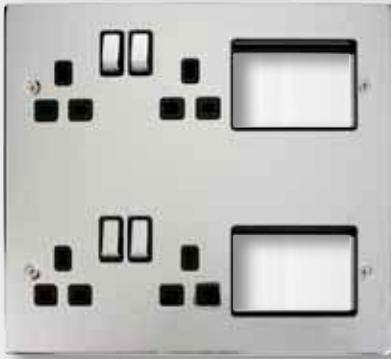
Dimensions: 250mm x 216mm x 8mm

These New Media plates are manufactured from stainless steel, available in the following decorative finishes: Antique Brass (AB), Polished Brass (BR), Satin Brass (SB), Polished Chrome (CH), Satin Chrome (SC), Black Nickel (BN), Pearl Nickel (PN), Brushed Stainless (BS), Stainless Steel (SS) and Polar White (PW).
Understanding the code: **MP** - Plate Style **516** - Product No **BN** - Plate Finish.

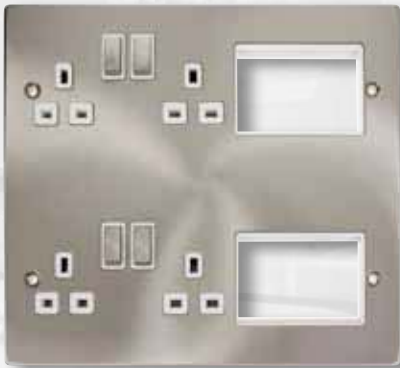
New Media Plates

New Media Semi-Modular MediaPlate With Twin Media Module Aperture Twin Connection

new
media



MP606CHBK



MP606SCWH



MP606PW

New Media Plate (Semi-Modular)

MP606CHBK New Media Plate 'Ingot'

MP606SCWH New Media Plate 'Ingot'

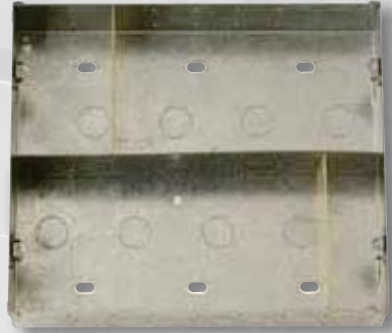
MP606PW New Media Plate

Product is supplied with 4 x 13A DP switched sockets.

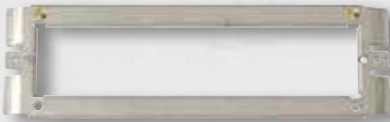
Back box MP525 required, see following page.

Back Box Depth: 47mm **Cable Sizes:** 13A 4 x 2.5mm

Dimensions: 250mm x 216mm x 8mm



MP525



MP510



MP520

Yoke

MP510 Media Plate Yoke (8 Module)

Back Boxes

MP520 Media Plate 47mm Deep Back Box (8 Module)
1 Movable Divider Plate Supplied

MP525 Media Plate 47mm Deep Back Box (16 Module)
2 Movable Divider Plates Supplied

Divider Plates

MP521 (MP520) 47mm Deep Divider Plate (76x44mm)

MP526 (MP525) 47mm Deep Divider Plate (93x44mm)

Galvanised steel back boxes supplied for flush mounting of MEDIA Plates. Mounting yoke facilitates pre-assembly of required modules. Fitted with twin earth terminals. Divider plates can be installed as necessary in order to screen sensitive modules.

Cutout Sizes: 520: 225mm x 75mm 525: 225mm x 194mm

New Media Plates

Unfurnished Media Plates

deco



VPAB310



VPBN311



VPCH312

define®



FPBS310



FPCH311



FPPN312

DECO - Unfurnished New Media Plates

VP310** 1 Gang Plate Single Aperture

VP311** 1 Gang Plate Twin Aperture

VP312** 2 Gang Plate Quad Aperture

**DECO blank mounting plates are available in Antique Brass (AB), Polished Brass (BR), Satin Brass (SB), Polished Chrome (CH), Satin Chrome (SC), Stainless Steel (SS), Black Nickel (BN) and Pearl Nickel (PN). Please add 2 letter prefix to identify required finish i.e. VPCH311 for chrome.

DECO - Unfurnished Georgian Style - Cast Brass

GCBR311 1 Gang Plate Twin Aperture

GCBR312 2 Gang Plate Quad Aperture

DEFINE - Unfurnished New Media Plates

FP310** 1 Gang Plate Single Aperture

FP311** 1 Gang Plate Twin Aperture

FP312** 2 Gang Plate Quad Aperture

**DEFINE products are available in Black Nickel (BN), Brushed Stainless Steel (BS), Polished Chrome (CH), Pearl Nickel (PN) And Stainless Steel (SS) i.e. FPPN312 For Pearl Nickel.

Back Box Depth: 310, 311, 312: Dependant on module used. MP606: 47mm **Cable Size:** Dependant on module used

Dimensions: Deco: 1 Gang (88mm x 88mm x 8mm), 2 Gang (146mm x 88mm x 8mm)

Define: 1 Gang (88mm x 88mm x 1.3mm*), 2 Gang (146mm x 88mm x 1.3mm*) *Excluding gasket

definity



SIN310BK



SIN311BK



SIN312BK



SCP310CH



SCP311SS



SCP312BS

DEFINITY - Unfurnished New Media Plates (Inserts)

- SIN310BK** 1 Gang Plate Single Aperture Insert
- SIN311BK** 1 Gang Plate Twin Aperture Insert
- SIN312BK** 2 Gang Plate Quad Aperture Insert

DEFINITY - Unfurnished New Media Plates (Cover Plates)

- SCP310** Single Cover Plate Single Aperture Cover Plate
- SCP311** Single Cover Plate Twin Aperture Cover Plate
- SCP312** Double Cover Plate Quad Aperture Cover Plate

Back Box Depth: Dependant on module used **Cable Size:** Dependant on modules used

Dimensions: 1 Gang (86mm x 86mm x 4mm), 2 Gang (146mm x 86mm x 4mm)

Definity plates are coated stainless steel, they are available in the following finishes: Chrome (CH), Stainless Steel (SS), Brushed Steel (BS), Polar White (PW) and Red (RD). Please refer to page c3 for more information.

New Media Plates

Unfurnished Media Plates

MODE



CMA310



CMA311



CMA312

polar



PRW310



PRW311



PRW312

POLAR - Unfurnished New Media Plates

- PRW310** 1 Gang Plate Single Aperture
- PRW311** 1 Gang Plate Twin Aperture
- PRW312** 2 Gang Plate Quad Aperture

MODE - Unfurnished New Media Plates

- CMA310** 1 Gang Plate Single Aperture
- CMA311** 1 Gang Plate Twin Aperture
- CMA312** 2 Gang Plate Quad Aperture

Back Box Depth: Dependant on module used **Cable Size:** Dependant on modules used
Dimensions: Mode: 1 Gang (86mm x 86mm x 9.5mm), 2 Gang (146mm x 86mm x 9.5mm)
Polar: 1 Gang (86mm x 86mm x 11mm), 2 Gang (146mm x 86mm x 11mm)

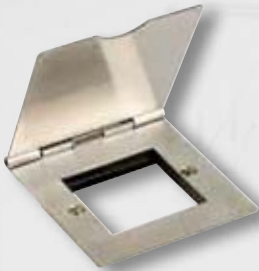
essentials



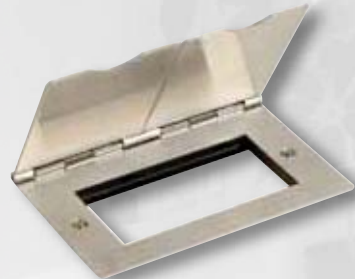
CL311



CL312



FS311SS



FS312SS

Metal Clad - Unfurnished New Media Plates


- CL311** 1 Gang Plate Twin Aperture
CL312 2 Gang Plate Quad Aperture

Floor Socket - Unfurnished New Media Plates - Stainless Steel

- FS311SS** 1 Gang Plate Twin Aperture
FS312SS 2 Gang Plate Quad Aperture

Back Box Depth: CL311/312: 40mm Minimum FS311SS/FS312SS: 35mm Minimum

Dimensions: CL311: 80mm x 80mm x 44mm CL312: 140mm x 80mm x 44mm FS311SS: 86mm x 93mm FS312SS: 146mm x 93mm



New Media Modules

The NEW MEDIA Modules offer a flexible build solution to a host of individual media transfer requirements. The clip fit grid modules are simple to install in their blank mounting plates.





MM405WH



MM406BK



MM410WH



MM415BK



MM450WH



MM405
(Back)



MM406
(Back)



MM410
(Back)



MM415
(Back)



MM450
(Back)

New Media Modules

MM405WH Single Satellite (Shielded) - White
MM405BK Single Satellite (Shielded) - Black

MM406WH Double Satellite - White
MM406BK Double Satellite - Black

MM410WH Single Female IEC (TV) (Shielded) - White
MM410BK Single Female IEC (TV) (Shielded) - Black

MM415WH Single Male IEC (FM) (Shielded) - White
MM415BK Single Male IEC (FM) (Shielded) - Black

MM450WH Blank - White
MM450BK Blank - Black

Back Box Depths: 35mm **Dimensions:** 25mm x 50mm

New Media Modules

New Media Modules

NEW
media



MM420BK



MM425WH
/ MM427WH (Unprinted)



MM430BK



MM440WH



MM420
(Back)



MM425
(Back)



MM430
(Back)



MM440
(Back)

New Media Modules (Shielded)

MM420WH Diplexed TV and Radio - White
MM420BK Diplexed TV and Radio - Black

MM425WH Diplexed TV and Satellite - White
MM425BK Diplexed TV and Satellite - Black

MM427WH Diplexed TV and Satellite (Un-printed) - White
MM427BK Diplexed TV and Satellite (Un-printed) - Black

MM430WH Triplexed TV, Radio and Satellite - White
MM430BK Triplexed TV, Radio and Satellite - Black

MM440WH Quad TV, Radio, Sat 1 and Sat 2 - White
MM440BK Quad TV, Radio, Sat 1 and Sat 2 - Black

All diplexed, triplexed and quad modules require installation of a signal combining distribution amplifier such as the Media Distribution Unit, see page i20.

Not suitable for use in the Republic of Ireland.

Module	Number of inputs	Number of outputs	Signals on input 1	Signals on input 2
MM420	1	2	TV, Radio	
MM425	1	2	TV, Sat 1	
MM427	1	2	TV, Sat / Return	
MM430	1	3	TV, Sat 1, Radio	
MM440	2	4	TV, Sat 1, Radio	Sat 2

Back Box Depths: 47mm Dimensions: 50mm x 50mm



MM460BK



MM465WH



MM470BK



MM480WH



MM485BK



MM460
(Back)



MM465
(Back)



MM470
(Back)



MM480
(Back)



MM485
(Back)

New Media Modules

MM460WH Telephone Master - White
MM460BK Telephone Master - Black

MM465WH Telephone Secondary - White
MM465BK Telephone Secondary - Black

MM470WH RJ11 Outlet - White
MM470BK RJ11 Outlet - Black

MM480WH RJ45 Cat-5E Outlet - White
MM480BK RJ45 Cat-5E Outlet - Black

MM485WH RJ45 Cat-6 Outlet - White
MM485BK RJ45 Cat-6 Outlet - Black

All New Media RJ45 modules are non-screened and are suitable for use with either Type A or Type B wiring conventions.

Back Box Depths: 35mm **Dimensions:** 25mm x 50mm

New Media Modules

New Media Modules



MM490BK



MM495WH



MM550WH



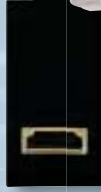
MM1000



MM490
(Back)



MM495
(Side)



MM501BK

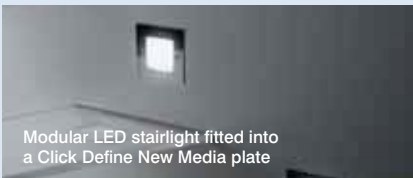


HDMI Outlet with Flexible
Connection (80mm Long)

New Media Modules

- MM1000BL** 230V 1W Modular LED Stairlight - Blue
- MM1000CW** 230V 1W Modular LED Stairlight - Cool White
- MM1000WW** 230V 1W Modular LED Stairlight - Warm White

A versatile 50mm x 50mm Euro module LED, which clips into a '311' or '312' New Media plate. Utilises a standard wiring accessory back box. Please see page i9 for more information on New Media plates.



Modular LED stairlight fitted into
a Click Define New Media plate

New Media Modules

- MM490WH** RCA x 2 Outlet - White
- MM490BK** RCA x 2 Outlet - Black
- MM495WH** Loudspeaker Outlet x 2 - White
- MM495BK** Loudspeaker Outlet x 2 - Black
- MM501WH** HDMI 1.4 Outlet + Fly Lead - White
- MM501BK** HDMI 1.4 Outlet + Fly Lead - Black
- MM550WH** Brush Module - White
- MM550BK** Brush Module - Black



MM002BK



MM022WH



MM023BK



MM025WH



MM047BK



MM002
(Back)



MM022
(Back)



MM023
(Back)



MM025
(Back)



MM047
(Back)

New Media Modules

MM002BK 10AX 2 Way NM Switch Module - Black

MM002WH 10AX 2 Way NM Switch Module - White

MM025BK 10AX Intermediate NM Switch Module - Black

MM025WH 10AX Intermediate NM Switch Module - White

MM047WH 13A FCU Module - White

MM047BK 13A FCU Module - Black

20A Double Pole Switch Modules

MM022BK 20A DP NM Switch Module - Black

MM022WH 20A DP NM Switch Module - White

20A Double Pole Switch Modules With Neon

MM023BK 20A DP NM Switch Module + Neon - Black

MM023WH 20A DP NM Switch Module + Neon - White

Neon positioned on top of rocker

Standards: BS EN 60669, 047: BS 1363

Back Box Depths: 35mm **Cable Size:** 022 / 023: 1x6mm² / 3mm x 2.5mm² **Dimensions:** 25mm x 50mm

New Media Modules

New Media Modules



MM010BK



MM020WH



MM030BK



MM033WH



MM038WH



MM510BK



MM510WH

Power Socket Outlets

MM010WH 13A UK Socket Outlet - White

MM010BK 13A UK Socket Outlet - Black

MM020WH 16A European Schuko Socket Outlet - White

MM020BK 16A European Schuko Socket Outlet - Black

Not suitable for use with metal clad boxes CL311 and CL312

MM030WH 15A 125V US Socket Outlet - White

MM030BK 15A 125V US Socket Outlet - Black

MM033WH 15A Round Pin Socket Outlet - White

MM033BK 15A Round Pin Socket Outlet - Black

MM038WH 5A Round Pin Socket Outlet - White

MM038BK 5A Round Pin Socket Outlet - Black

MM510WH 1A USB Charging Outlet - White

MM510BK 1A USB Charging Outlet - Black

Standards: 010: BS 1363, 033 & 038: BS 546, 030: UL498, 020: IEC 60884 - SS428 0834

Back Box Depths: 35mm, MM020: 47mm **Cable Size:** 1x6mm² / 3 x 2.5mm² **Dimensions:** 50mm x 50mm



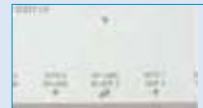
Domestic Distribution Unit MP940

Media Distribution Unit for the Home Environment

- Unit distributes UHF, Radio, Sky/Sky+ and CCTV to the main TV plus outputs for up to two additional Sky receivers
- Controls and distributes main Sky/Sky+ receiver to 6 additional locations
- Conforms to the Sky Homes specification
- Not suitable for use in The Republic of Ireland



Ground Connection



Power On LED (Green)

Dimensions: 260mm x 125mm x 45mm



Input Frequency Range

BI/FM Input	MHz	47 to 108
BII/DAB Input		174 to 230
UHF2 (CCTV) Input		470 to 862
UHF1 (TV) Input		470 to 862
SAT 1...4 (Satellite) Input		950 to 2300
Uplink Input		470 to 862
IR Link (R,TV 1...6)		5 to 30

Output Frequency Range

Downlink	MHz	87.5 to 2300
Uplink Output IR, SAT 2		5 to 30 / 950 to 2300
R/TV 1...6		87.5 to 862
BI/FM/DAB/BII/UHF Outputs (R/TV 7,8)		47 to 23000

Typical Gain

SAT 1...4, UHF 2 to Downlink	dB	8
FM, DAB to Downlink		10
FM, DAB to R/TV 1...4		6
FM, DAB to R/TV 5...6		10
Uplink to R/TV 1...8		6
IR Link to Uplink/IR 1...4		2
IR Link to Uplink/IR 5...6		0

Supply / Line Power Requirements

Supply Voltage, V DC,	12V / 190-330mA
(from plug top power supply)	
Digital Link Power Supply Outputs	
(R,TV 1...6, Overload protected)	9V / DC @ 20mA
Power On LED (Green)	Yes
DC Power bypass, (for LNB) to SAT 1...4	Max. 300 mA
Automatic Masthead Line Power facility	
(Via Input 2, Overload protected)	12V DC / 50 mA

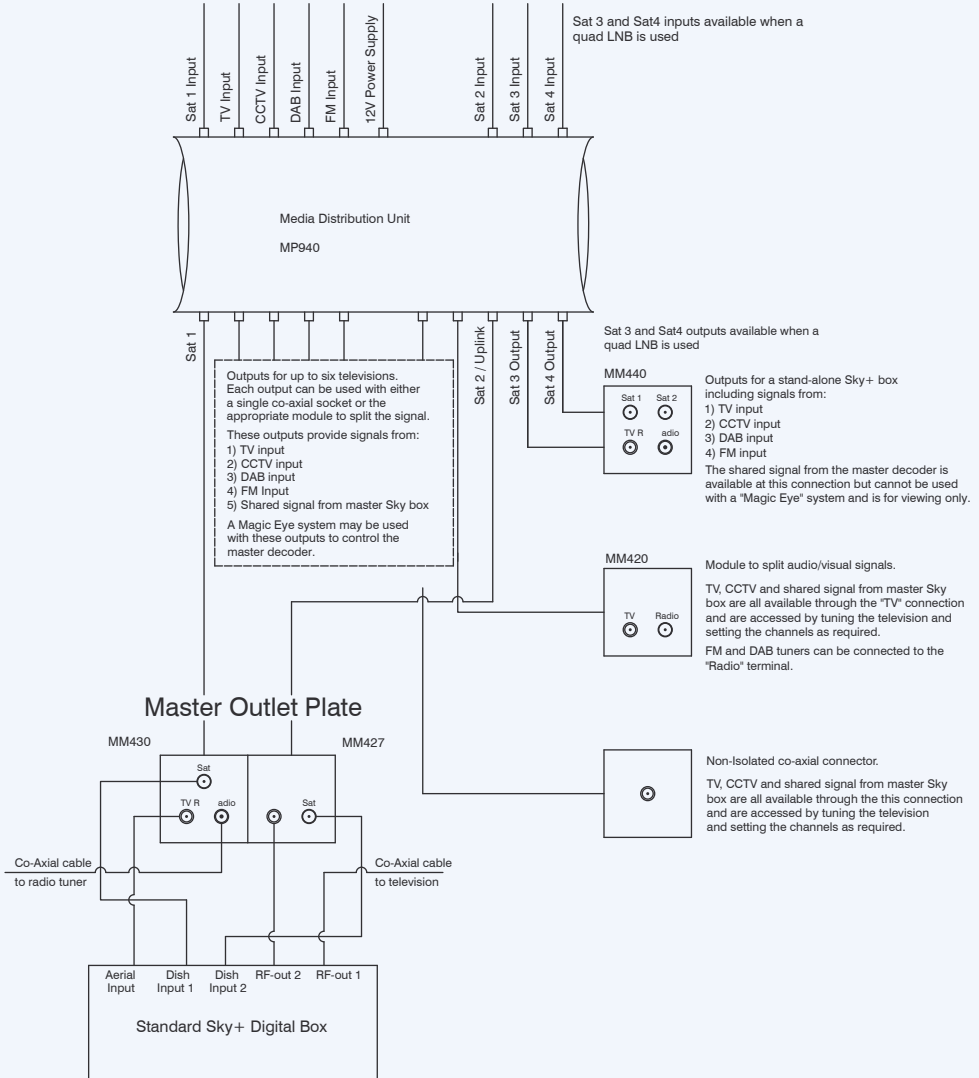
Connectors

Inputs / Outputs	F Type (female on all ports)
Power Supply input connector	F Type female

Mechanics

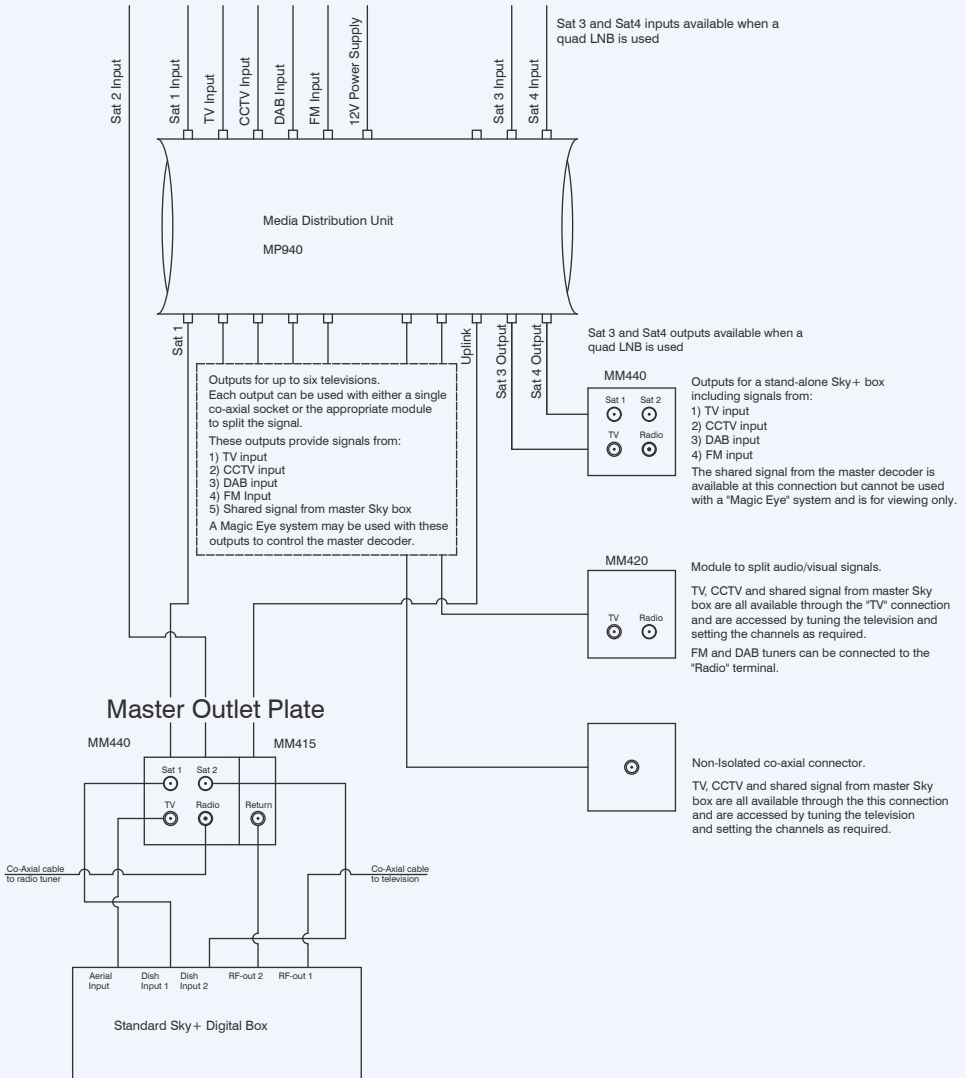
R.F Screening	Yes
Access to chassis Earth terminal	Yes

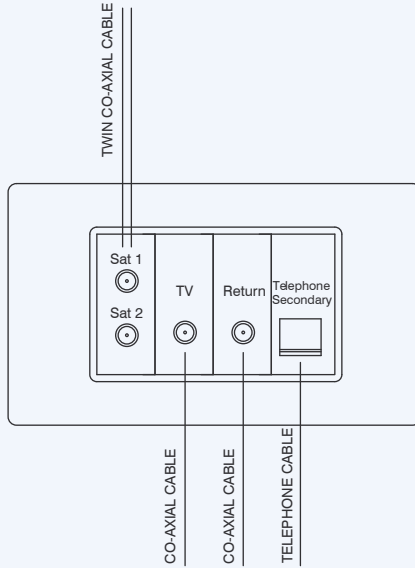
Utilising two co-axial cables to connect the distribution system to the master outlet plate and satellite decoder



Triple Cable System

Utilising three co-axial cables to connect the distribution system to the master outlet plate and satellite decoder





Here, the input cables from the satellite dish and the TV aerial are connected directly to the rear of each module.

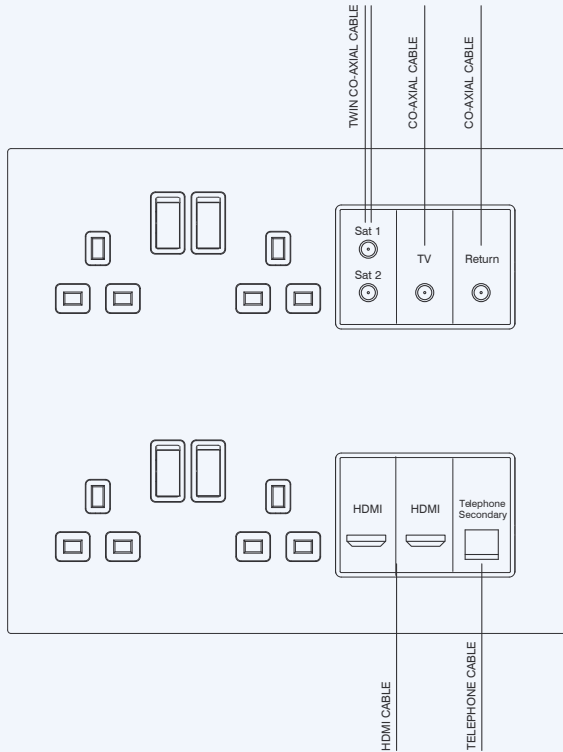
The return module is provided to allow the Sky signal to be shared throughout the property using a suitable distribution amplifier (MP940).

The use of a secondary telephone connection allows for easy connection between the Sky box and the telephone line.

Products used for this configuration:

- 1x **312 Media Plate
- 1x MM406 Twin satellite module
- 1x MM415 Co-axial module
- 1x MM410 Co-axial module
- 1x MM465 Telephone secondary module

Typical Sky+ HD Installation



Here, the input cables from the satellite dish and the TV aerial are connected directly to the rear of each module.

The return module is provided to allow the Sky signal to be shared throughout the property using a suitable distribution amplifier.

The use of a secondary telephone connection allows for easy connection between the Sky box and the telephone line.

An HDMI module is provided to facilitate a high definition connection between the Sky box and television.

MM405		Single 'F' Satellite
Connection	Frequency	Insertion Loss (dB) (Typical)
In to out	5 to 2300 MHz	1.6
Power pass to connection		

MM410		Single IEC Female
Connection	Frequency	Insertion Loss (dB) (Typical)
In to out	5 to 862 MHz	0.3
Power pass to connection		

MM415		Single IEC Male
Connection	Frequency	Insertion Loss (dB) (Typical)
In to out	5 to 862 MHz	0.3
Power pass to connection		

MM420		Diplexed TV & Radio
Connection	Frequency	Insertion Loss (dB) (Typical)
In to Radio	87.5 to 230 MHz	2.0
In to TV	47 to 68 MHz	1.5
In to TV	254 to 862 MHz	2.0
Power pass to TV		

MM425		Diplexed TV & Satellite
Connection	Frequency	Insertion Loss (dB) (Typical)
In to TV	47 to 862MHz	2.0
In to Satellite	950 to 2150 MHz	2.5
In to Satellite	2150 to 2400 MHz	3.0
Power pass to satellite		

MM427		Diplexed TV & Satellite (Un-printed)
Connection	Frequency	Insertion Loss (dB) (Typical)
In to TV	47 to 862MHz	2.0
In to Satellite	950 to 2150 MHz	2.5
In to Satellite	2150 to 2400 MHz	3.0
Power pass to satellite		

MM430		Triplexed TV, Radio & Satellite
Connection	Frequency	Insertion Loss (dB) (Typical)
In to Radio	87.5 to 230MHz	3.0
In to TV	47 to 68MHz	2.0
In to TV	254 to 862MHz	2.0
In to Satellite	950 to 2300 MHz	3.0
Power pass to satellite		

MM440		Quad TV, Radio, Satellite 1 & Satellite 2
Connection	Frequency	Insertion Loss (dB) (Typical)
In to Radio	87.5 to 230MHz	3.0
In to TV	470 to 862MHz	2.5
In to Satellite 1	950 to 2300 MHz	3.0
In to Satellite 2	25 to 2400 MHz	1.5
Power pass to satellite 1 & satellite 2		