



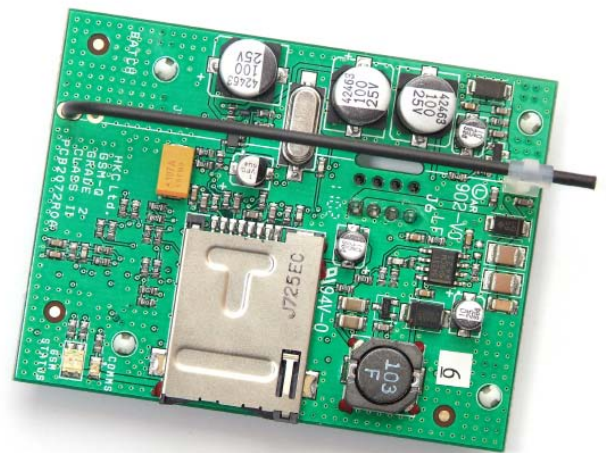
# GSM-Q

## Plug-on GSM Unit

In keeping with our ease of use philosophy, this plug-on GSM unit is very straightforward to programme via the panel's menu structure.

One of its many features include voice messaging. The unit can call the key-holder and playback a message using the panel's extensive library of phrases.

- Plugs directly onto *Quantum 70* panel  
(*version 3.0 or higher panel software required*)
- Plugs directly onto *SW-1070* panel  
(*version 3.0 or higher panel software required*)
- Incorporates GPRS for both Central Stations and *SmartLink700*
- Central station protocols:  
SIA, Extended SIA, FastFormat & Contact ID
- Can also send voice messages to Key-holders' phones
- Supports high-speed upload / download via *SmartLink700*
- Alarm reports from your system via SMS text messaging
- Control your system via SMS text commands
- GPRS Jam Detection
- Quiescent Current: 20mA
- Transmit Current: 140mA
- Temperature: -10 to +40°C
- Weight: 30g
- Size: 70mm x 53mm x 24mm
- EN 50136-1
- EN Category S2
- Environmental Class II



**SecureWave**  
868MHz Radio

Safe & Secure

Thank you for considering HKC products for your security system.

For further information in relation to any of our products, please contact us at:

**HKC Ltd.**  
Parkway Business Centre, Ballymount,  
Dublin 24, Ireland.  
T: 353 1 456 7007  
F: 353 1 456 8332  
E: sales@hkc.ie

or visit us at [www.hkc.ie](http://www.hkc.ie)

**HKC Ltd.**  
Unit 4D, Junction of Princess Street/Lomax Street,  
Rochdale,  
Lancashire  
OL12 0HA  
T: 44 1706 345324

UK Technical Support: 0800 111 4599

[www.hkc.ie](http://www.hkc.ie)