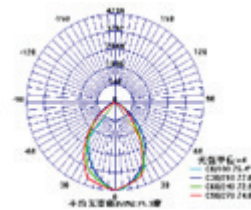
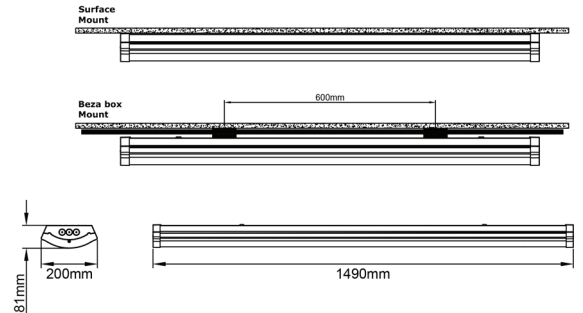
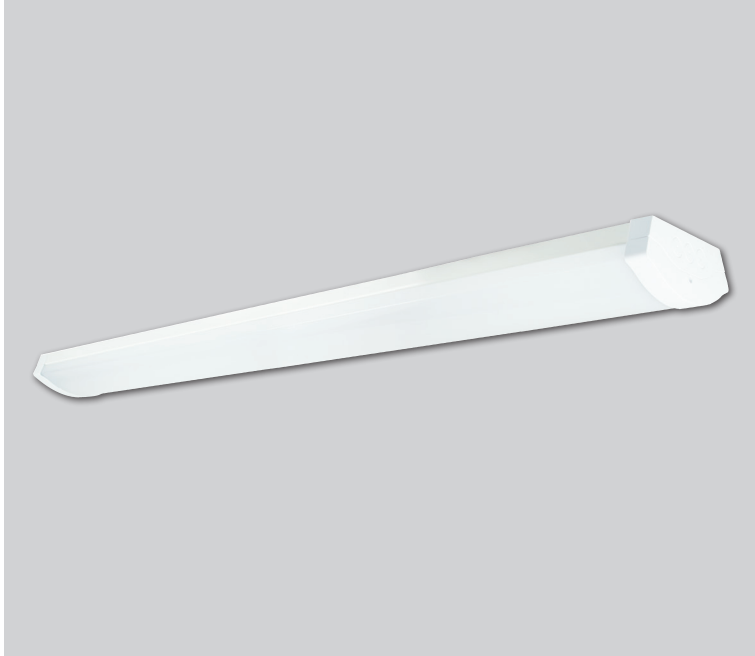


Campus II 58W Standard Datasheet

4000K 7250Lm 125Lm/W LED Batten

PXCAMP58WV2



Dimensions	1490*200*81mm
Weight	2kg
Material	Steel body, PC diffuser
Colour/Finish	White
IK Rating	IK08
Voltage/Frequency	220-240V 50Hz
Luminous Flux	7250lm
Luminous Efficacy	125Lm/W
Color Rendering Index	80
CCT Colour Temp	4000K
SDCM Colour Consistency	<4
UGR Unified Glare Rating	<19
LEDs	Everlight
Light Control	On/Off
Beam Angle	80°
Adjustable	No
Chip	Epistar
Maintained Luminous Flux	L80 (B10) 50,000h
Warranty	5 Years

Features & Applications

The 58W 5ft UGR<19 Campus II surface luminaire is designed specifically for academic buildings. Also available in emergency mode, this slim, contemporary style twin surface fitting provides an highly efficient 125Lm/W and an excellent quality of luminance for learning environments.

Ideal Application Areas Include:

Schools/Colleges, Office Developments, Retail Premises, Hotels and Leisure Facilities, Hospitals and Public Buildings.